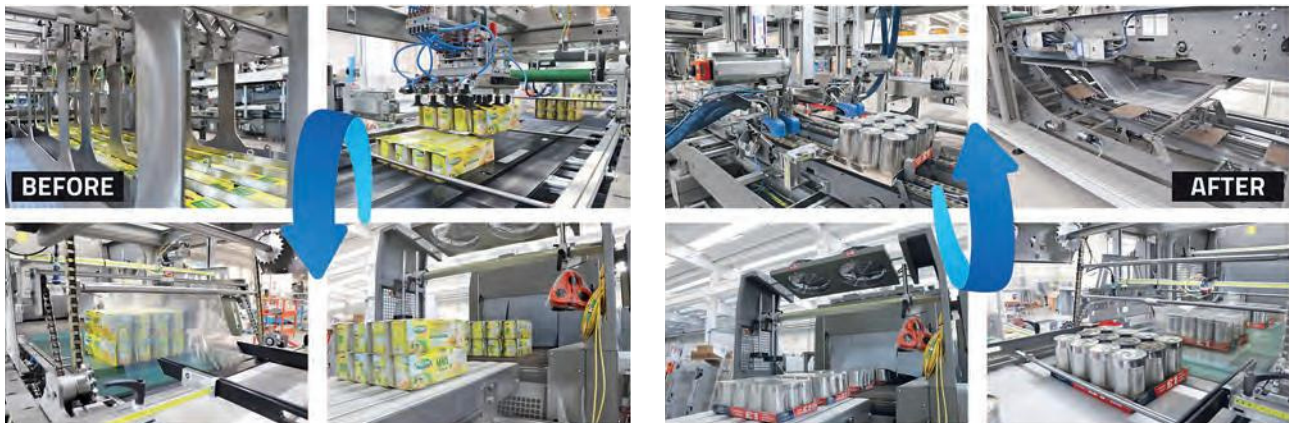


# CM R ERGON: THE NEW COMBINED PACKER BY SMI THAT REVOLUTIONIZES THE FORMAT CHANGEOVER



**T**he frequent changes in consumer habits and preferences impose new competitive challenges and great adaptability to create packaging solutions suitable to intercept every market demand.

This can only be achieved thanks to **versatile bottling and packaging plants, which quickly and easily switch from one type of production to another** thanks to advanced automation and smart technologies.

SMI experience in end-of-line packaging has led to the development of increasingly efficient solutions, such as the new combined packer from the **CM R ERGON** range that stands out for the innovative revolving quick format changeover system, which enables to quickly switch from a film-only packaging to a tray + film or wrap-around box without any manual intervention for the replacement of components or the adjustment of machine devices. In fact, everything happens automatically.

## Fast format changeover thanks to the innovative revolving system

The **CM R ERGON** combined packers combine the functions of a wrap-around case packer, a tray packer and a shrink wrapper in a single system. They are thus the ideal solutions for those customers who have to frequently switch from one product to another or from one format to another and need to pack a wide variety of containers in the following types of packages:

- 1) film only
- 2) flat cardboard pad+film
- 3) tray+film

- 4) tray only
- 5) fully closed wrap-around boxes
- 6) partially closed boxes.

The new **CM R ERGON** packers by SMI have been developed with the aim of offering an extremely innovative solution to those companies that opt for a combined packaging machine for processing various products and realizing several packs **at a maximum production speed of 80 packs/minute** (depending on the type of container and pack).

The versatility of combined machines involves frequent format changeover operations.

Thus, the idea of SMI designers to revolutionize these operations by developing a new revolving system to ensure easy, quick, fast and repeatable format changeover operations. Furthermore, mistakes by the operators are

## SECTORS

 **PACKAGING**

 **BEVERAGE**

 **FOOD**



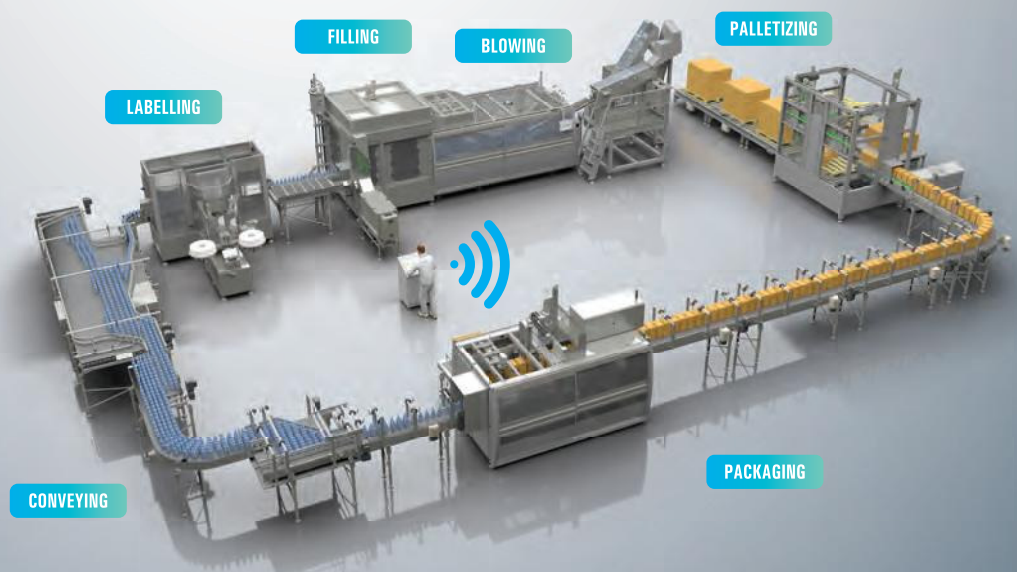
# DESIGN WITH US YOUR CIRCULAR PACKAGING



## IMPROVING YOUR CARBON FOOTPRINT IS EASY WITH SMI!

Our bottling and packaging systems benefit from Industry 4.0 and IoT technologies, can process recyclable materials such as rPET and allows for considerable energy savings.

Find out our solutions for packing a wide range of containers up to 50,000 bottles/hour.



removed, as the adjustments to be made are set by the machine system control.

**What is the revolving format changeover**

The CM R models are equipped with the innovative revolving format changeover system (supplied as standard) which consists of two rotary modules:

- the first positioned in the cardboard/loose product advance area (rotary module 1)
- the second positioned in the area of box/tray formation and loose product flow (rotary module 2).

The two rotary modules are supplied with double equipment: (a) that required for working in film only and (b) that for packaging in tray or wrap-around boxes.

By rotating 180° a single rotary module or both modules,

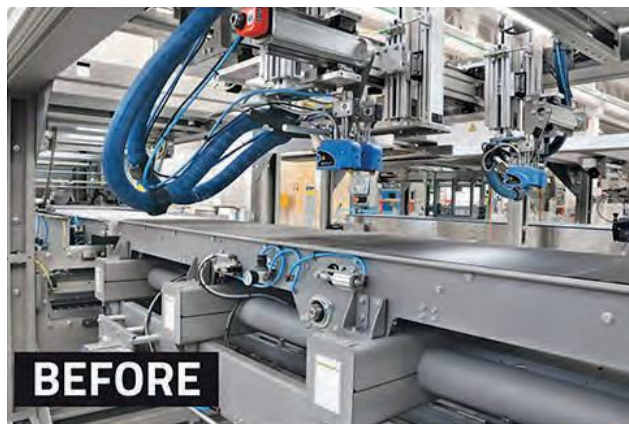


it is possible to obtain different pack configurations with the CM R combined packer. All this without any mechanical adjustment to be manually made by the operator.

**The format changeover of yesterday and today**

In most packers available on the market, the change of the pack format involves the adjustment of several axes, an operation that is generally performed manually by means of hand wheels. This type of operation can take a lot of time for the operator and can lead to mistakes during the adjustments with effects on the production efficiency.

On the contrary, thanks to the new revolving format changeover system, it is possible to save time during the tooling operation, the number of rejects is reduced, the machine downtime caused by wrong settings is eliminated, thus ensuring high quality and maximum efficiency of the packaging line.



**Main advantages of CM R ERGON with revolving format changeover**

- when you have to switch from one working condition to another (i.e. from film only to wrap-around case), it is sufficient to rotate 180° one or both modules;
- no mechanical adjustment is required for the machine reconfiguration;
- no manual intervention is required for the component replacement;
- the format changeover, totally automated, is a fast, repeatable and precise operation;
- drastic reduction of format change times;
- greater precision, as module 1 (cardboard/loose product advance area) and module 2 (box/tray former) are already prepared to process the new type of packaging;
- greater production efficiency for customers who need frequent switches between running film-only and tray or box;
- reduced maintenance and installation costs.

[www.smigroup.it](http://www.smigroup.it)

